

Development of the EMAS Reference Document on Best Environmental Management Practice in the Public Administration Sector

Learning from frontrunners
Promoting best practice



Geneva, Wednesday 17 April 2013

Presentation at:



Paolo Canfora

Sustainable Production and Consumption Unit

Institute for Prospective Technological Studies (IPTS)

Joint Research Centre (JRC)

European Commission

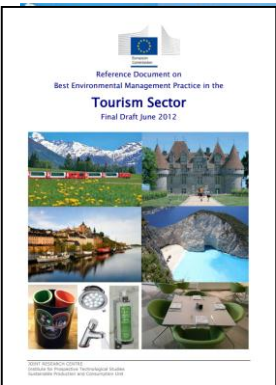
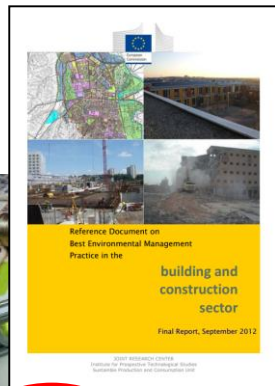
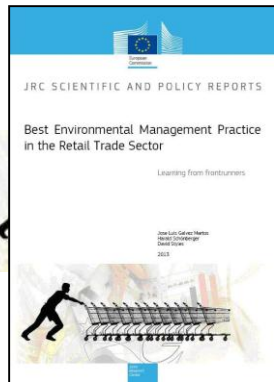
The Sectoral Reference Documents on Best Environmental Management Practice

- Legal basis: EMAS Regulation (CE 1221/2009)
- Not only for EMAS registered organisations but for all actors within the sectors covered who intend to improve their environmental performance
- Main elements
 - Best environmental management practices
 - Environmental performance indicators
 - Benchmarks of excellence



11 priority sectors

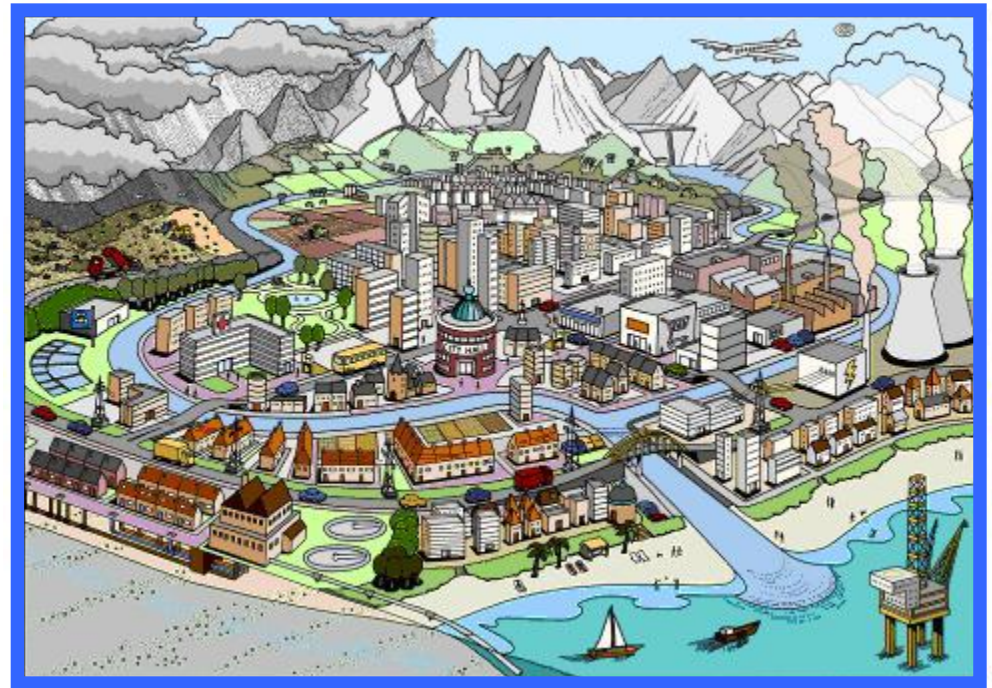
- Commission Communication (2011/C 358/02)



The Public Administration document

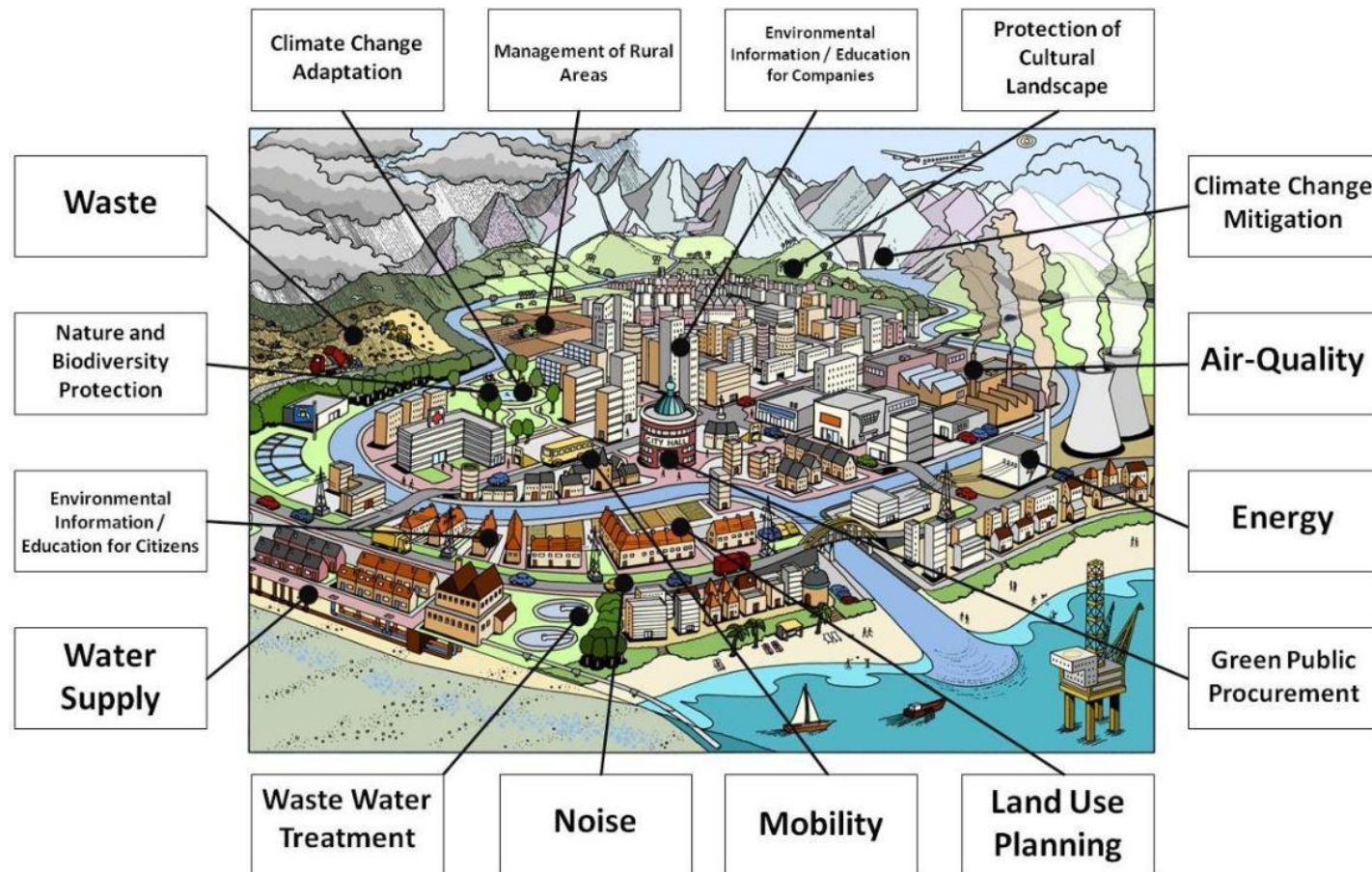


vs.



The scope

- Focus: municipalities/local authorities and the services they provide (directly and indirectly)



The “*frontrunners approach*”



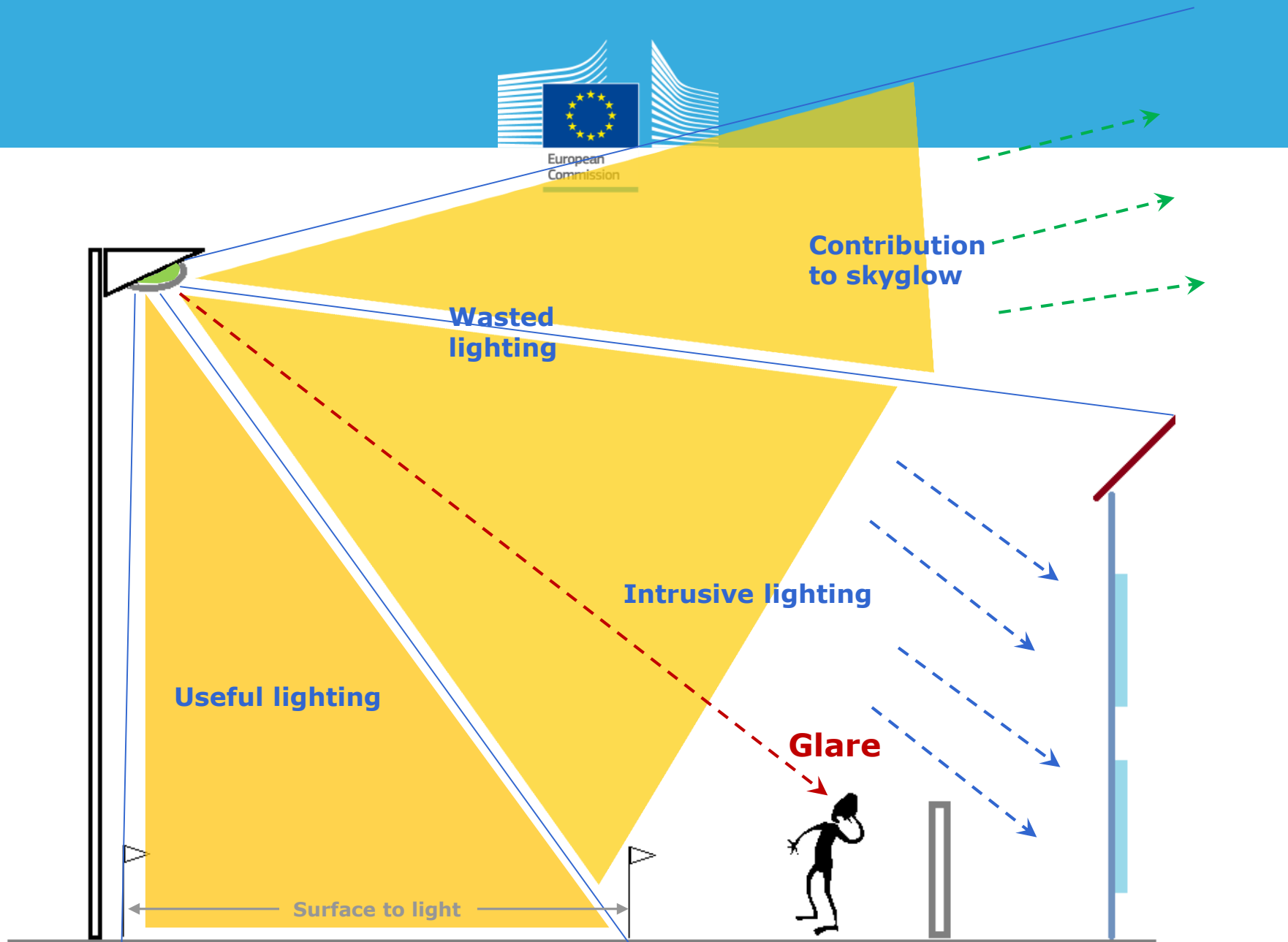
17 April 2013

Best environmental management practice (BEMP)

- Example: Energy efficient public lighting

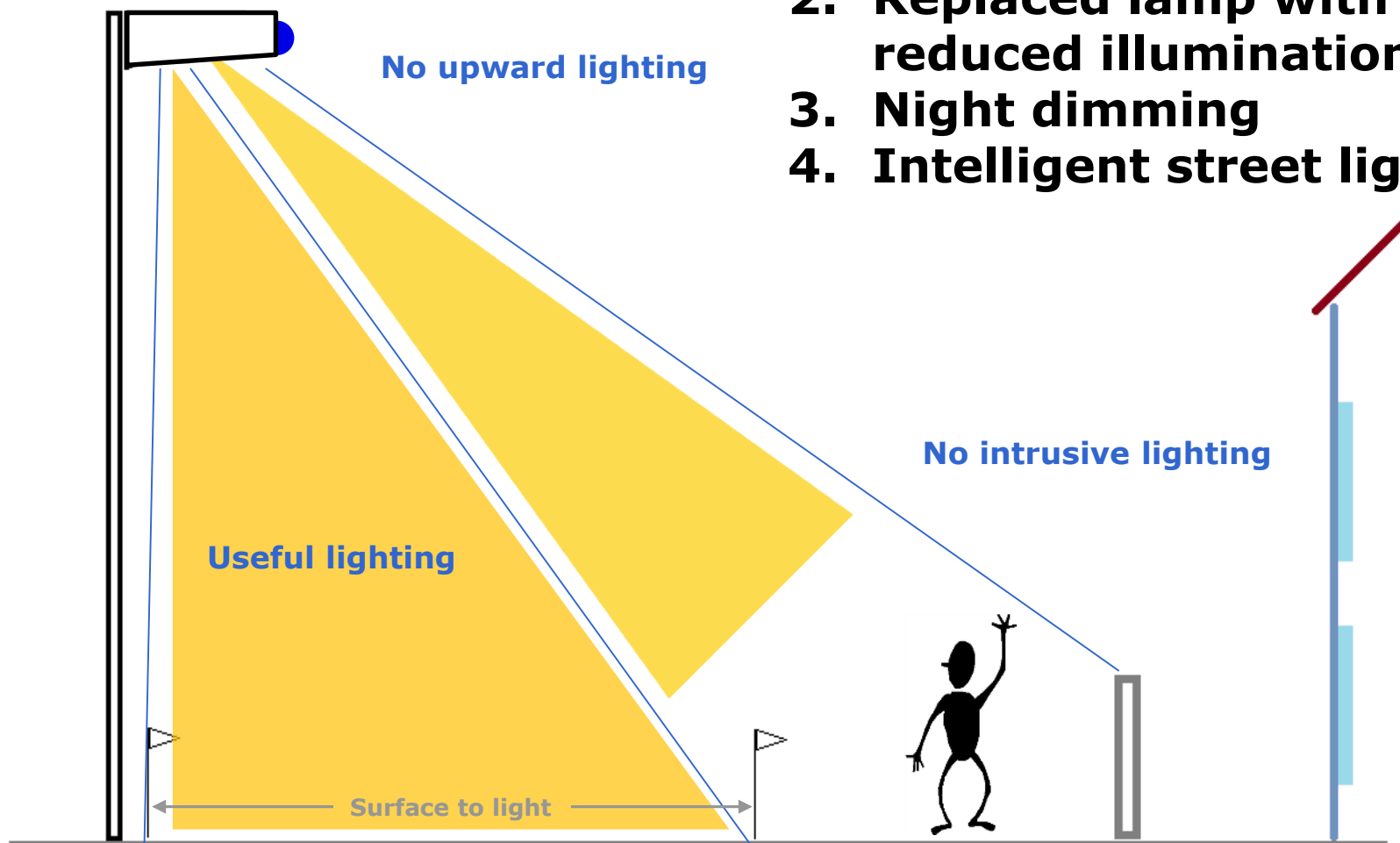


- 50-64% of direct energy bill of a municipality
- Often under its direct control
- Multiple benefits
 - Reducing costs
 - Improving street lighting quality
 - Decreasing light pollution
- High visibility
- Energy savings up to 60-86%



Savings up to 86%

1. Improved luminaire
2. Replaced lamp with reduced illumination
3. Night dimming
4. Intelligent street lighting

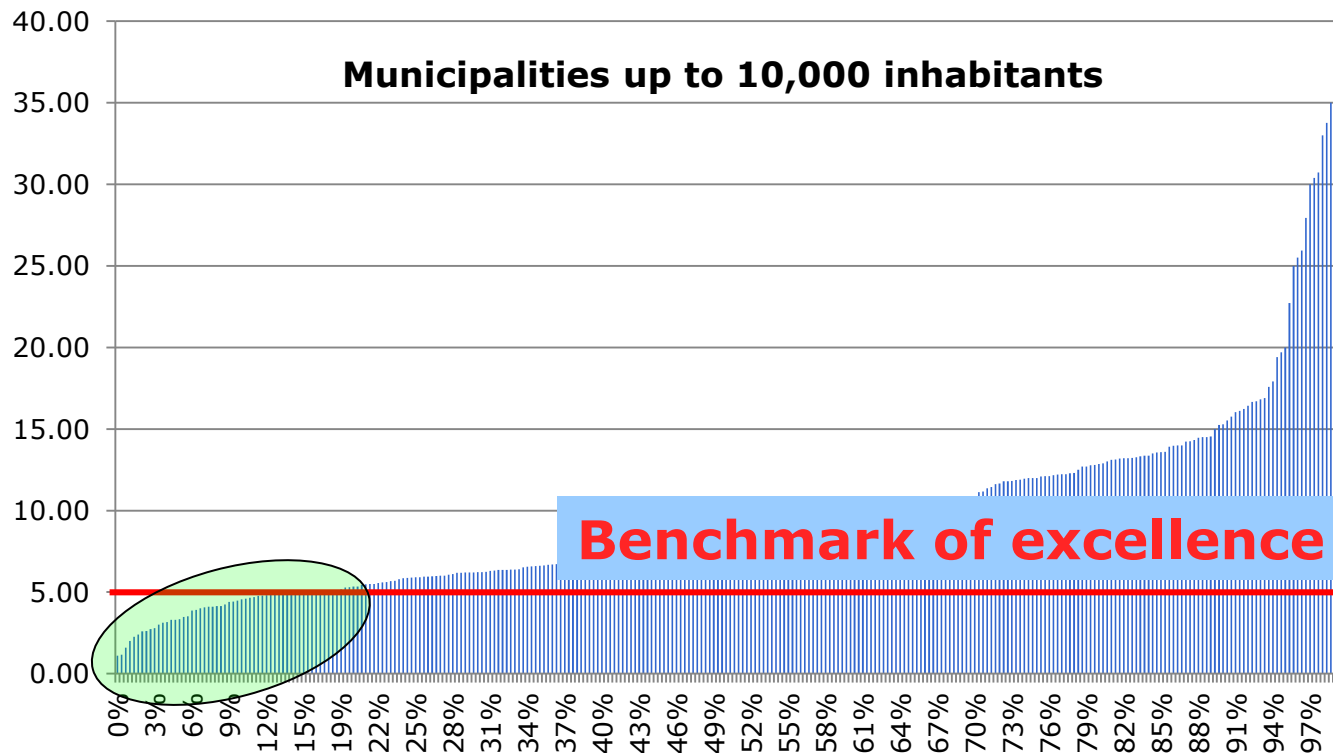


From BEMP to indicators and benchmarks

- A proposal to be discussed with the Technical Working Group

**Sector specific environmental
performance indicator**

Specific energy consumption (MWh/km y)

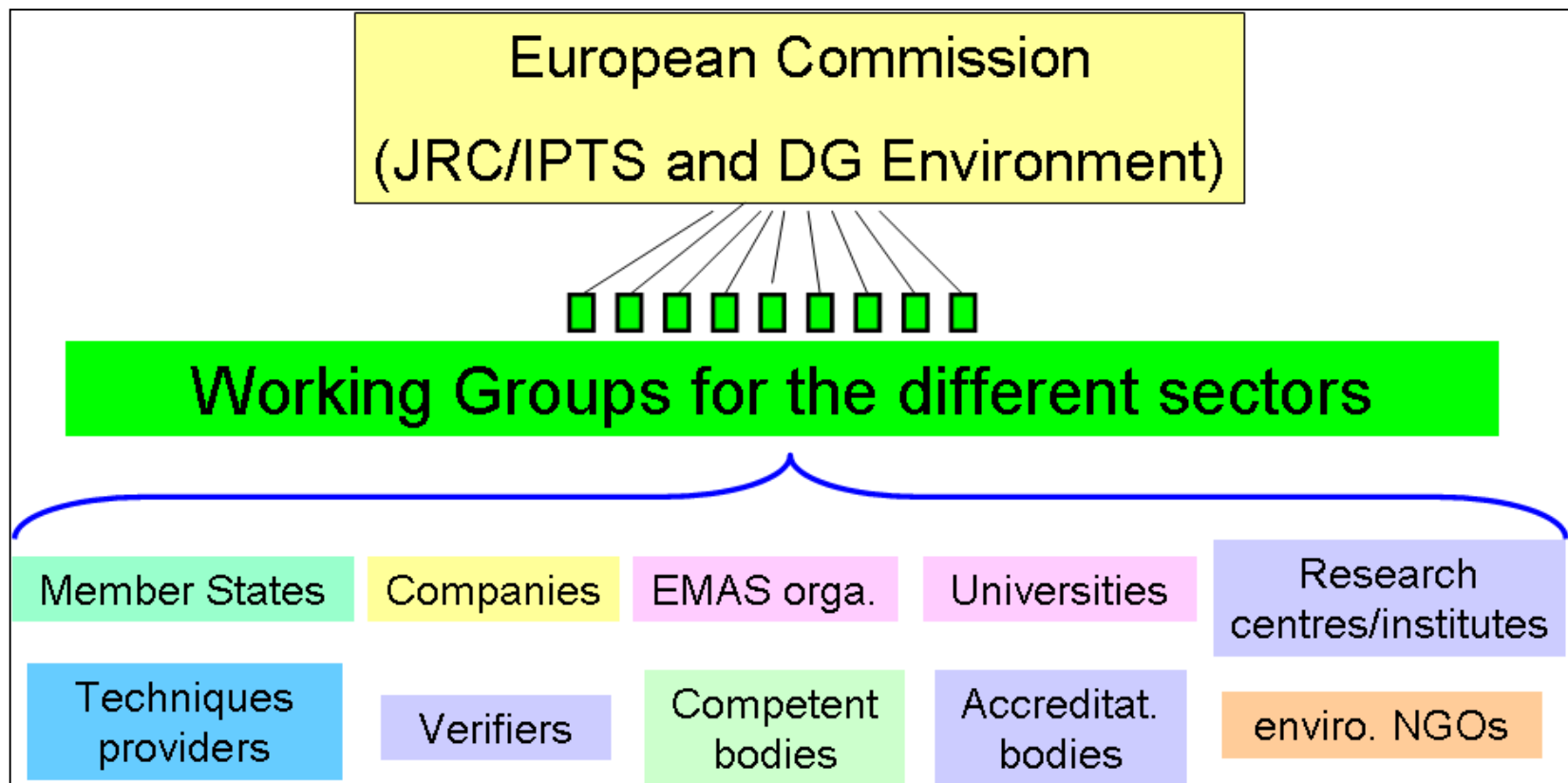


Own elaboration of data by SAFE – www.topstreetlight.ch

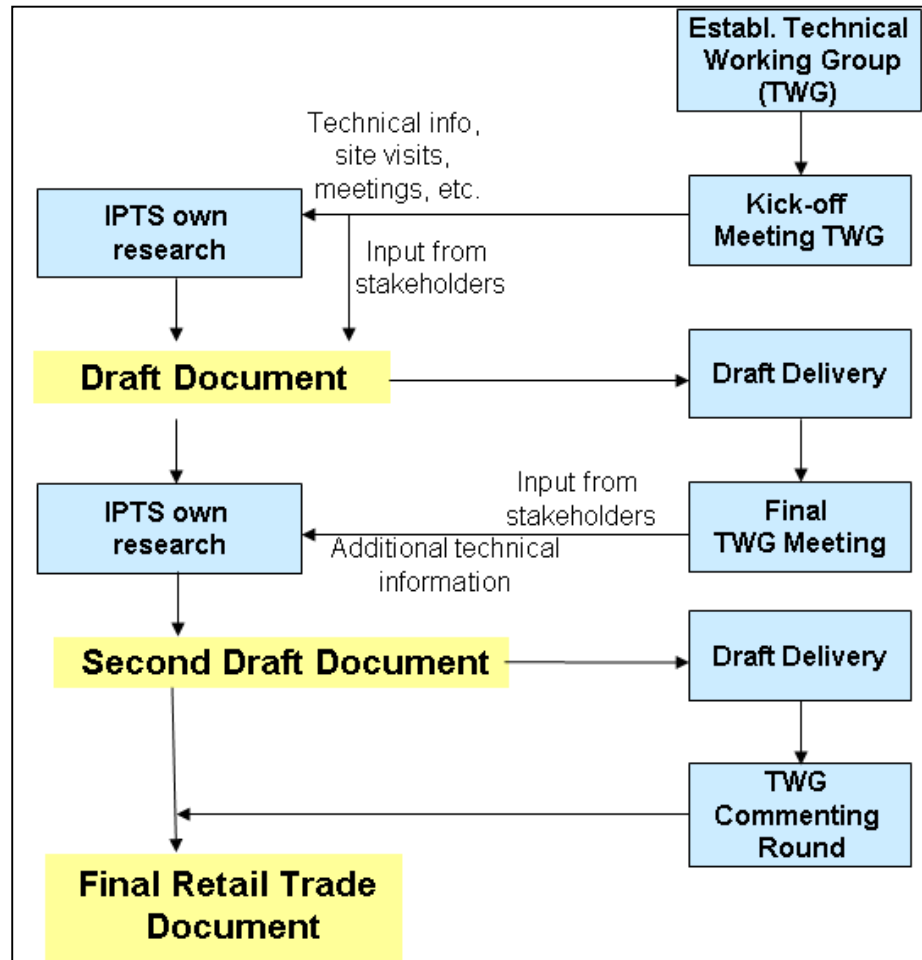
The process to develop the documents

- Preparation of a background report by an external contractor selected with a call for tender: ICLEI with support from Ambiente Italia and Lake Constance Foundation
- Set up of Technical Working Groups comprising sector experts to identify and validate the best practices identified, the indicators and the benchmark of excellence
- Direct research work of JRC staff
 - Desk research
 - Contacts with experts
 - Technical visits
- Final approval of the documents by the EMAS Committee and official adoption by the European Commission

The Technical Working Group ...



... and its key contribution



What's in it for European local governments?

- Proven and reliable information on relevant best practices
- Set of environmental performance indicators
- Possibility to benchmark their performance against frontrunners to identify improvement potentials
- Information is freely available.
- Costs related to implementation of best practices are duly described to allow investment decisions.
- Information on reference municipalities to obtain further information

Thank you!



**Paolo Canfora
Harald Schoenberger
Marco Dri**

European Commission
Joint Research Centre
Institute for Prospective Technological Studies
Sustainable Production and Consumption Unit

Edificio EXPO
C/ Inca Garcilaso, 3; E-41092 Seville

Email: jrc-ipts-emas@ec.europa.eu
<http://susproc.jrc.ec.europa.eu/activities/emas/index.html>