



Years of PREMIUM ENVIRONMENTAL MANAGEMENT



*High Level Conference on EMAS
European Central Bank
Frankfurt am Main
13 November 2015*





Go green with **Best Environmental Management Practices**

How **EMAS Sectoral Reference Documents** can support municipalities' efforts toward continuous environmental improvement

Frankfurt, 13 November 2015

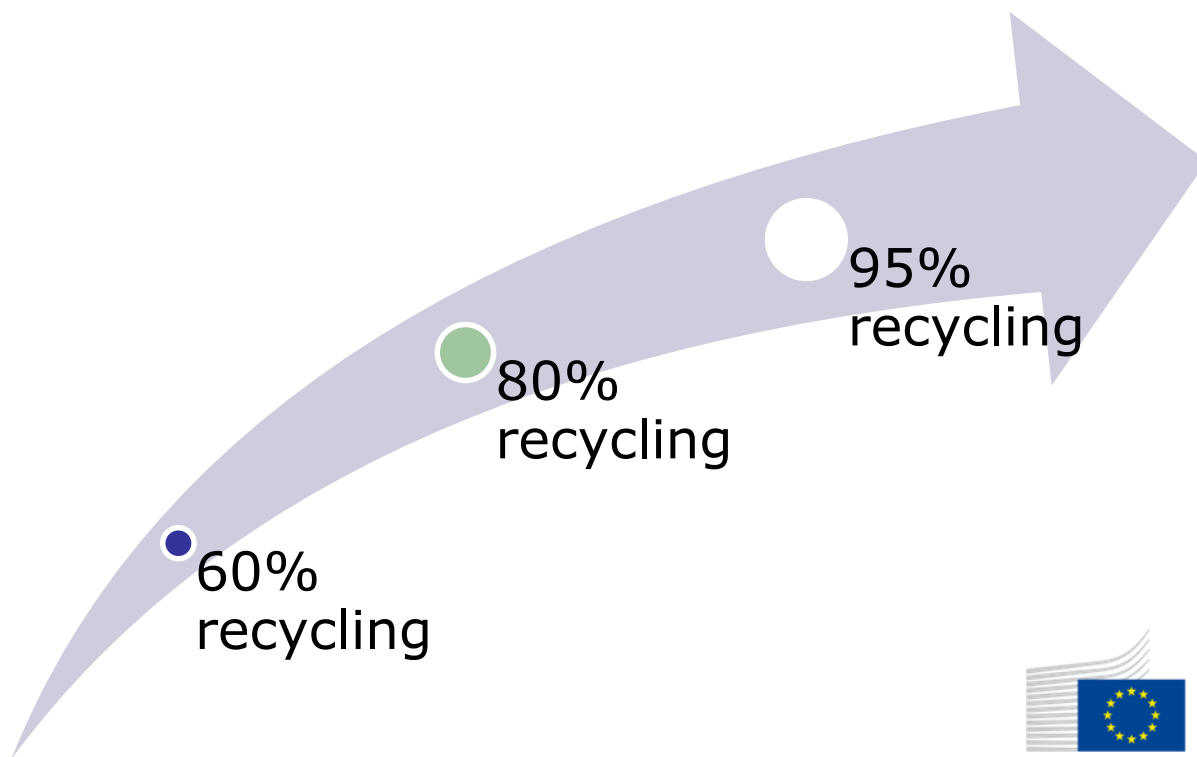
Paolo Canfora

European Commission – Joint Research Centre



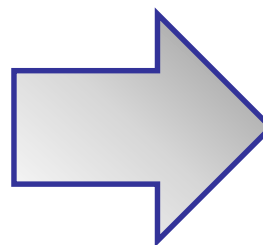
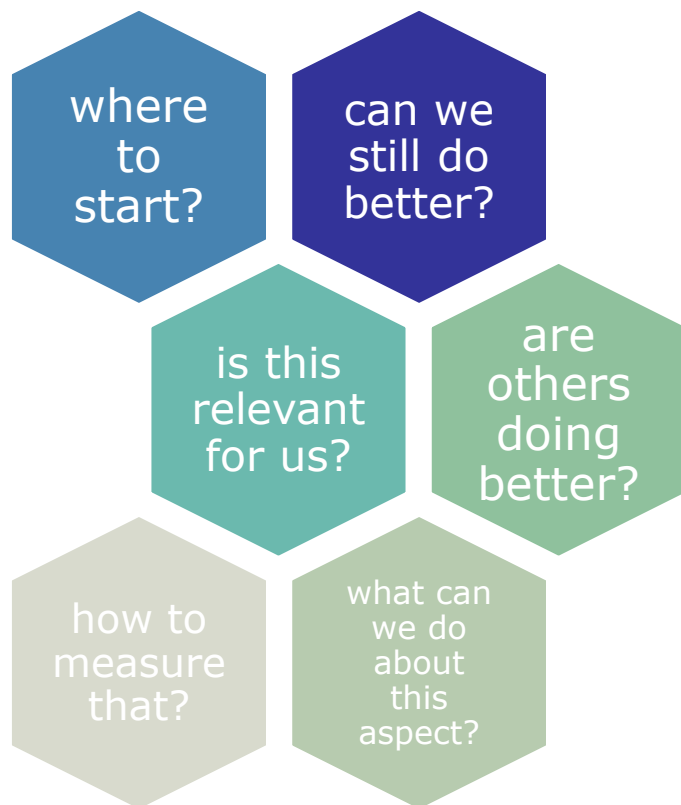


... in environmental performance





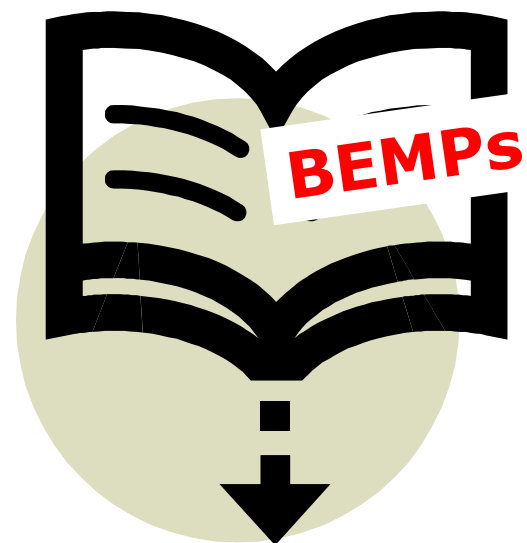
But what if you ask yourself



Look at the EMAS
Sectoral Reference
Documents



EMAS Sectoral Reference Documents



- **Best Environmental Management Practices**
- **Environmental Performance Indicators**
- **Benchmarks of Excellence**

GO GREEN WITH **BEST ENVIRONMENTAL MANAGEMENT PRACTICES!**



BEMP

**Best practices to reduce
environmental impacts**

Already in Use by Best Environmental Performers



**Practical
Guidance**



**Environmental
Performance
Indicators**



**Benchmarks
of Excellence**



**European
Commission**

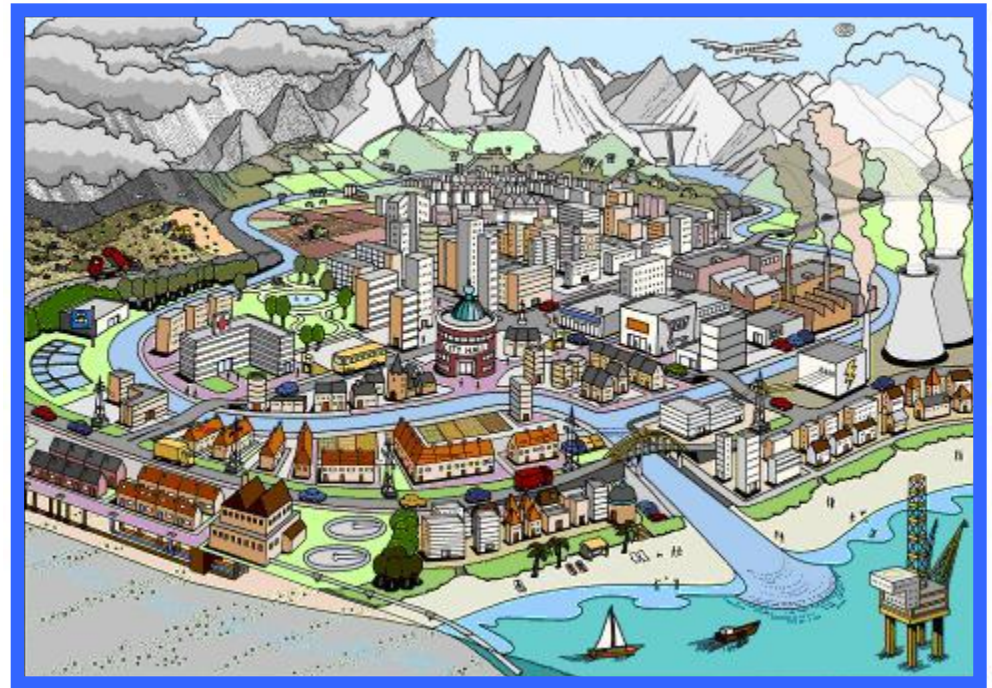
11 priority sectors



The Public Administration document

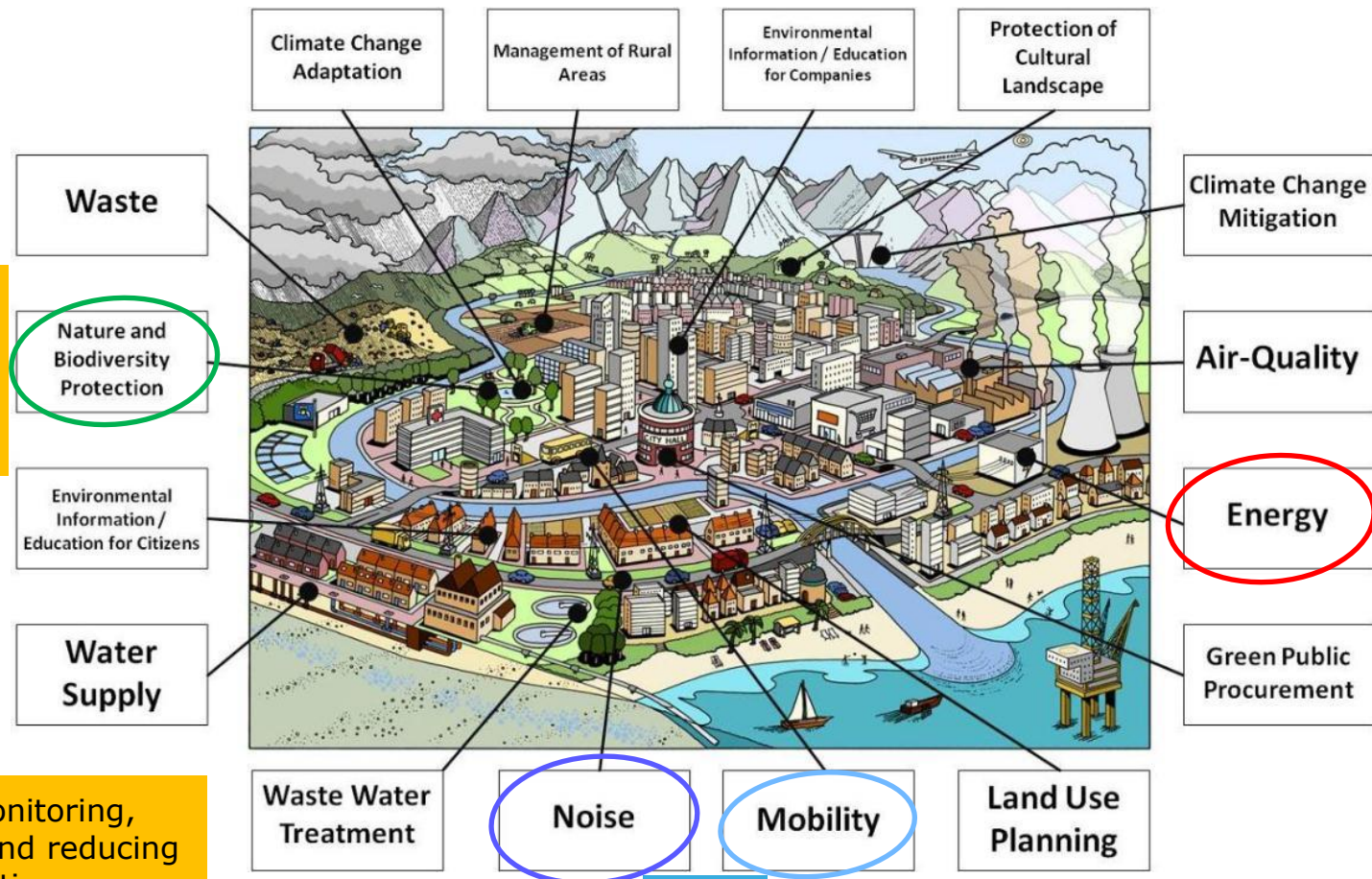


vs.



The scope

- Focus: municipalities/local authorities and the services they provide (directly and indirectly)



BEMP:
Creating
blue-
green
networks

BEMP:
Energy
efficient
public lighting

BEMP: Monitoring,
mapping and reducing
noise pollution

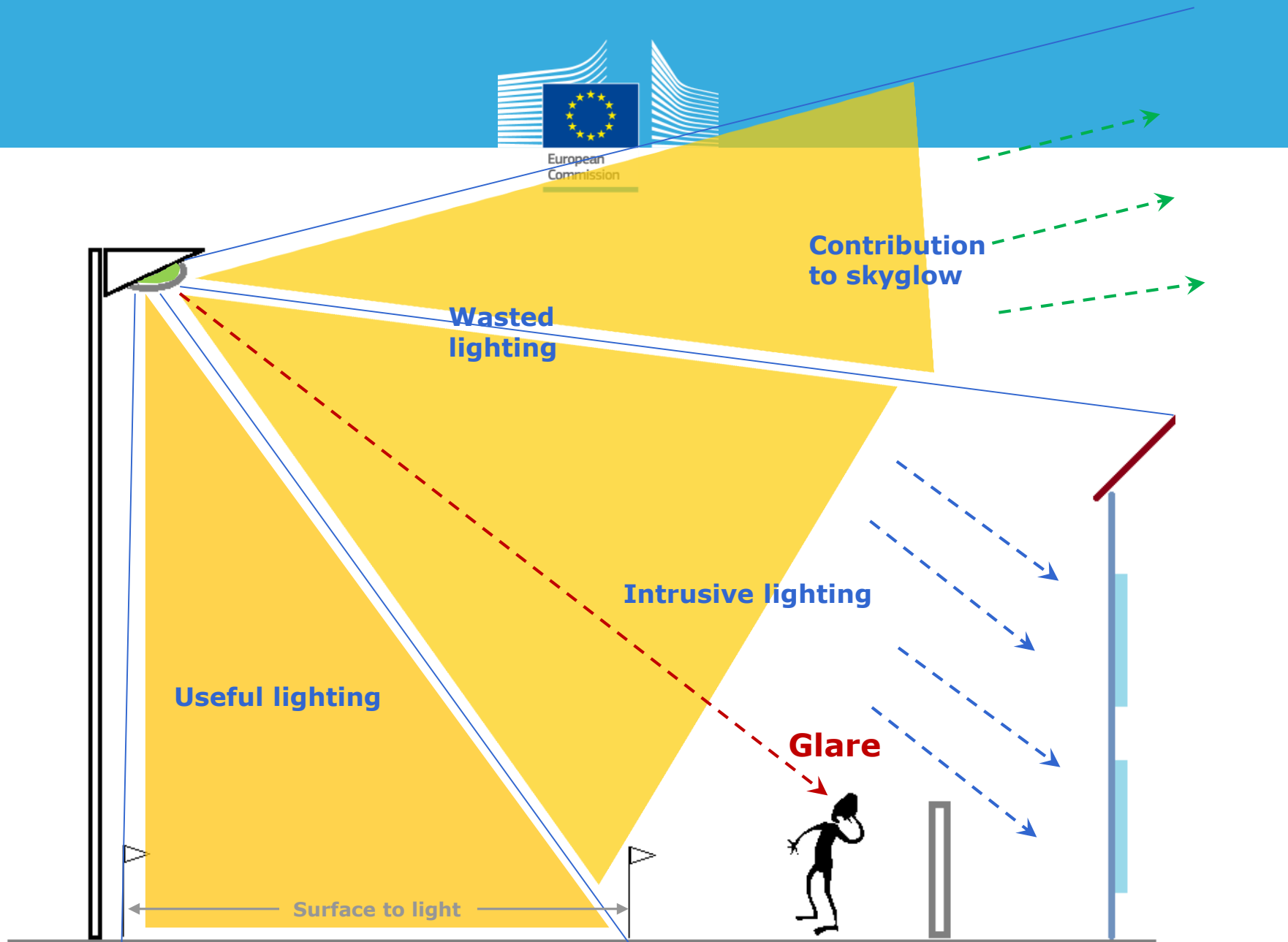
BEMP: Fostering cycling and walking

Best environmental management practice (BEMP)

- **An example:** Energy efficient public lighting

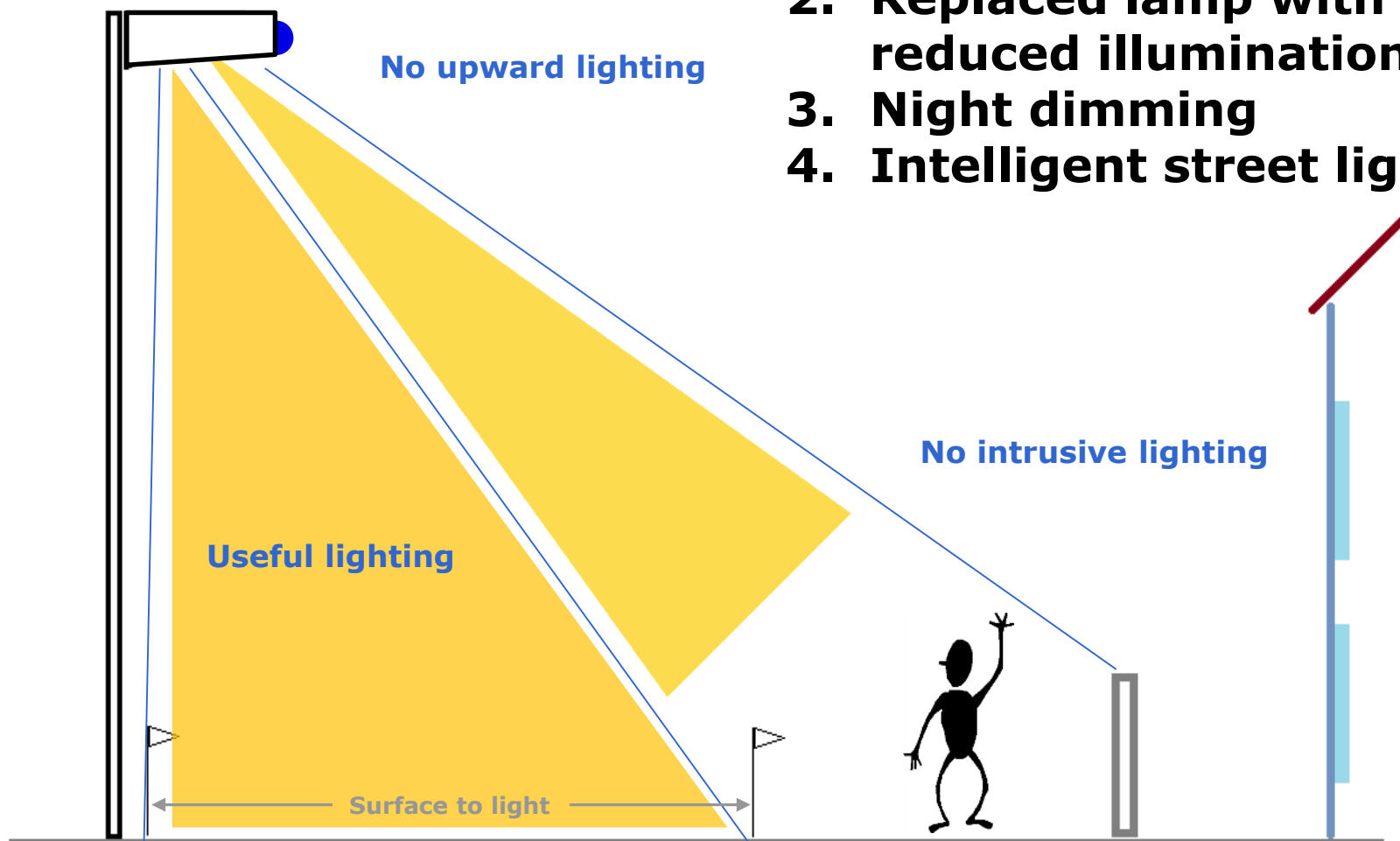


- 50-64% of direct energy bill of a municipality
- Often under its direct control
- Multiple benefits
 - Reducing costs
 - Improving street lighting quality
 - Decreasing light pollution
- High visibility
- Energy savings up to 60-86%



Savings up to 86%

1. Improved luminaire
2. Replaced lamp with reduced illumination
3. Night dimming
4. Intelligent street lighting

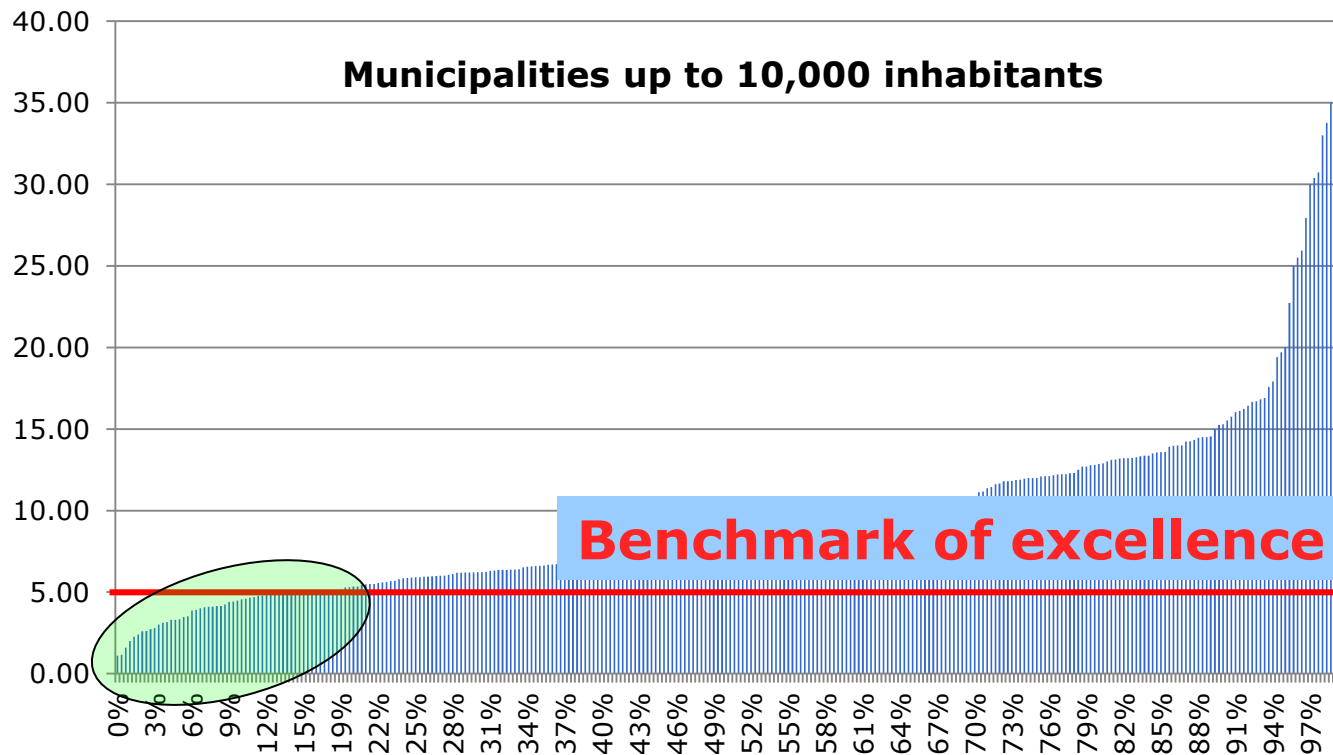


From BEMP to indicators and benchmarks

- A proposal to be validated

**Sector specific environmental
performance indicator**

Specific energy consumption (MWh/km² y)



Own elaboration of data by SAFE – www.topstreetlight.ch



A development process based on stakeholder involvement

Three phases:

- **Desk research** (background collection of information from literature, frontrunner organisations and experts)
- **Information exchange** within the forum of a **Technical Working Group** comprising sector experts to identify and validate the best practices identified, the indicators and the benchmark of excellence
- **Legislative process** (member state representatives in the EMAS Committee)

BEMPs for 11 sectors

The European Commission cooperates with experts and stakeholders from different sectors to identify BEMPs.

As a result of this cooperation, Sectoral Reference Documents for 11 sectors are currently under development.



WORKING GROUPS

JRC & DG Environment
in close cooperation with





What's in it for you?

Implementation is voluntary!

- Proven and reliable information on relevant best practices
- Set of environmental performance indicators
- Possibility to benchmark your performance against frontrunners to identify improvement potentials



What's in it for you?

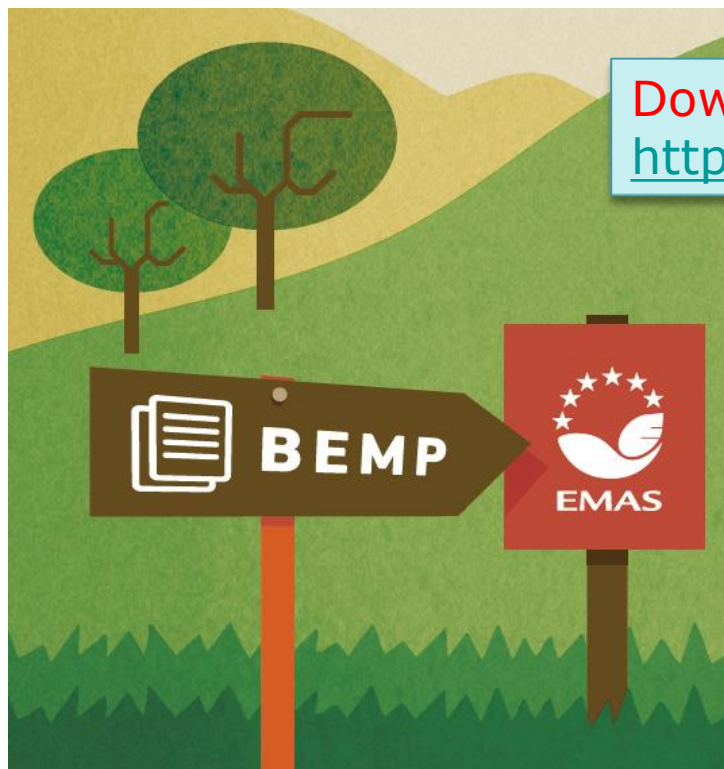
- Information is freely available.
- Costs related to implementation of best practices are duly described to allow investment decisions.
- Information on reference municipalities to obtain further information



European
Commission



So... use BEMPs to make the best of EMAS!



Download the BEMPs at:
<http://europa.eu/!fm46xt>





Thank you!

*Paolo Canfora
Marco Dri
Ioannis Antonopoulos
Pierre Gaudillat*

European Commission
Joint Research Centre
Institute for Prospective Technological Studies
Sustainable Production and Consumption Unit

Edificio EXPO
C/ Inca Garcilaso, 3; E-41092 Seville

Email: jrc-ipts-emas@ec.europa.eu

<http://susproc.jrc.ec.europa.eu/activities/emas/index.html>

